

3 Device Installation

WARNING

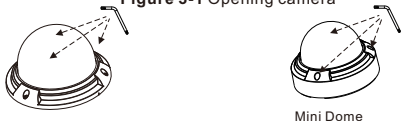
To avoid moisture intrusion, install the dome cover at least half an hour after the camera is installed and powered on.

The vandal dome camera can be installed in the ceiling, wall, wall bracket or ceiling bracket. This section describes how to install the camera in the ceiling.

Installation Steps:

Step 1 Use the T screwdriver in the accessory package to unscrew the three screws on the dome cover. The camera is opened, as shown in figure 3-1.

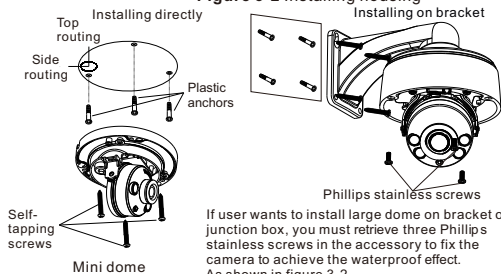
Figure 3-1 Opening camera



Step 2 Stick the Installation location sticker on the ceiling or wall, Drill three holes based on the marks on the sticker. Drive the plastic anchors into the holes

Step 3 Retrieve three black self-tapping screws from the accessory package. Then fix the screws to fasten the camera on the ceiling as shown in figure 3-2.

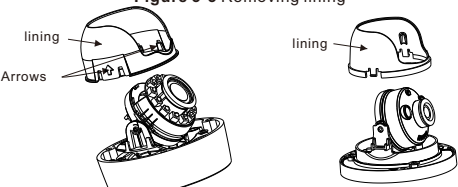
Figure 3-2 Installing housing



Step 4 Connect the network access port and power supply of the multi-head cable.

Step 5 Adjust the lens focal length and video angle range.
1. Press the arrows marked on the lining to remove the lining aside, as shown in figure 3-3.

Figure 3-3 Removing lining



Large dome with lining

Mini dome

2. View the video, loosen the slotted screw slightly as shown in figure 3-4 & figure 3-5, make camera's triaxial adjustments, adjust the screen to the scene you want to monitor, and then tighten the screws. Three-axis adjustment direction and angle are shown in figure 3-4 and figure 3-5.

Figure 3-4 Three-axis adjustment

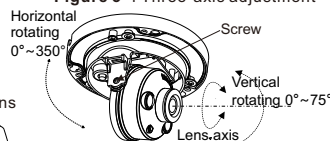


Figure 3-5 Adjusting lens

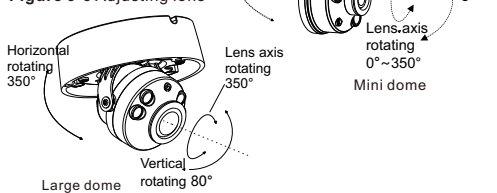
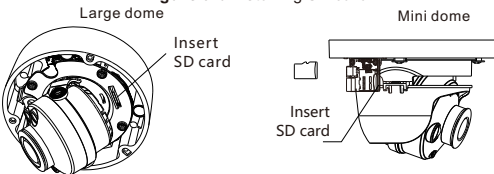


Figure 3-6 Installing SD card



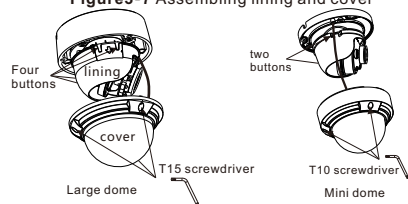
Step 6 Loosen the focus lever, and gently move the zoom lever to adjust the lens focal length to the desired position. Move the focus lever slightly to focus the lens clearly. Tighten the focus lever after completing the focusing operation, as shown in figure 3-4 (This step is only applied for large dome).

NOTE

- Some models may not require as many steps, please refer to the actual product.
- While focusing lever is in the process of focusing, an image might be blurred. Move the zoom lever to fine-tune the image. When image is clear, lock the zoom lever.
- If the lens of camera is an auto focus lens, set the focus value in Sensor > Lens control page in the web page.

Step 7 Assemble the lining with the main body and buckle the four button placements with the main body bracket. Aim the two screws hole with boss at the groove on the main body. Then fasten the dome cover, as shown in figure 3-6.

Figure 3-7 Assembling lining and cover



4 Quick Configuration (e.g. IE)

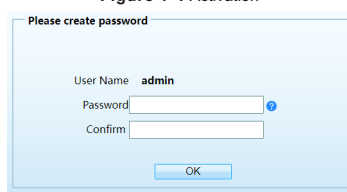
4.1 Login

Open the Internet Explorer, enter the IP address of IP camera (default value: DHCP on) in the address box, and press Enter. The activation page is displayed, as shown in figure 4-1.

NOTE

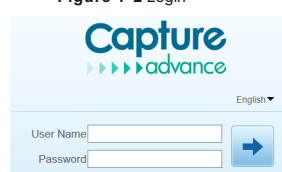
- Create password when you log in camera for the first time to ensure system security

Figure 4-1 Activation



- It is advised to restart the device three minutes later after modifying the password to ensure it was modified successfully
- You can change the system display language on the login page.

Figure 4-2 Login



4.2 Modify IP address

Choose **Configuration > Device > Local Network**, the **Local Network** page is displayed.

Input the IP address in the IP Address box and click **Apply** as shown in figure 4-3.

After the IP address is set successfully, please use the new IP address to login the Web interface.

Figure 4-3 Local Network

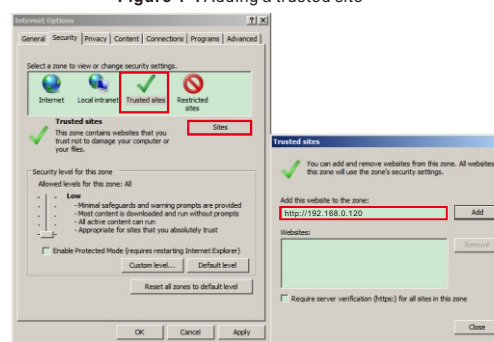


4.3 Browsing Video

To ensure the real-time video can be played properly, you must perform the following operation when you log in the web for the first time:

Step 1 the Internet Explorer. Choose **Tools > Internet options > Security > Trusted sites > Sites**, in the display dialog box, click **Add**, as shown in figure 4-4.

Figure 4-4 Adding a trusted site



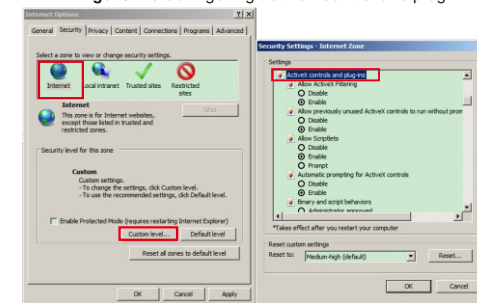
Step 2 In the Internet Explorer, choose **Tool > Internet Options > Security > Customer level**, and set **Download unsigned ActiveX control and initialize and script ActiveX controls not marked as safe for scripting under ActiveX controls and plug-ins to Enable**, as shown in figure 4-5.

Step 3 Download and install the player control as prompted.

NOTE

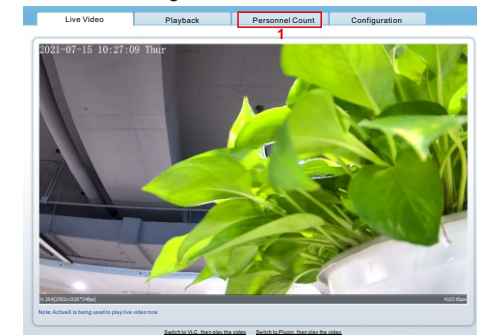
If the repair tips displayed when installing the control, please ignore the prompt, and continue the installation. The login page is displayed when the control is loaded.

Figure 4-5 Configuring ActiveX control and plug-in



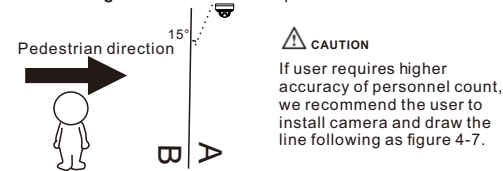
To browse a real-time video, click **Live Video**. The **Live Video** page is displayed, as shown in figure 4-6.

Figure 4-6 Live Video



- 1 Personnel Count:** User can query the data of personnel count, through year, month, day. The statistics can be downloaded. The data can be shown by line chart, histogram, list.
- 2 AI Live video:** Click the icon to view the snapshots of human face or license plate (click "Face" or "Plate" to switch). The bottom page will show the captured images of vehicle and human.

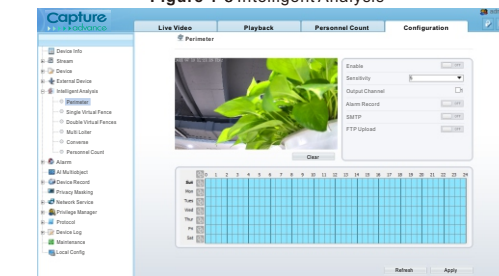
Figure 4-7 Installation of personnel count



4.4 Intelligent Analysis

At "Configuration > Intelligent Analysis" interface, user can set the parameters of Perimeter, Single Virtual Fence, Double Virtual Fence, Multi Loiter, Converse and Personnel Count, as shown in figure 4-8.

Figure 4-8 Intelligent Analysis



4.4 AI Multi object

At "Configuration > AI Multi object" interface, user can enable face detection, full body detection, vehicle detection, set the other parameters of detection.